



Digital Photo Systems

Turning memories into profits

Mitsubishi Solutions

Mitsubishi Electric presents a new range of retail solutions and systems, adapted to meet current market demands.

Mitsubishi's latest range of retail solutions have been specifically designed to suit the requirements of an array of high street stores, from small convenience stores and pharmacies that want to offer instant digital prints and ID photos, to larger stores and national chains that want to be able to offer their customers a complete one stop imaging solution.



Mitsubishi ID Point

A complete, flexible and affordable photo solution that has been designed with pharmacies and independent retailers in mind, Easyphoto and Easy Photo-ID70 are all in one instant photo printing and ID photo solutions. Producing beautiful, clear, full colour bleed to edge photographs in a matter of seconds Easyphoto and Easy Photo-ID70 use bio-metric software to assist with your ID and passport photos.



Mitsubishi Photo Point

Mitsubishi's Kiosk Gift takes digital photography solutions to a new level by meeting the needs of small to medium sized retailers that are looking to offer a flexible instant photo printing solution. Kiosk Gift offers popular photo gift type products including personalised calendars, greetings cards and photo albums that are designed to help your business grow.



Mitsubishi Advanced Photo Solution

Complementing our existing retail offerings Pocketbook Maker has been designed for stores that want to expand their business and offer their customers more than a standard print service. Providing great ROI, clients can use the Pocketbook Maker to produce unique photo pocket books quickly and easily.



Mitsubishi Image Centre - Flexilab

This is a complete, integrated solution designed for professional photography retailers who require high-level productions. This system is modular and can be added to grow and expand as your photo business increases.



Mitsubishi Studio Pro

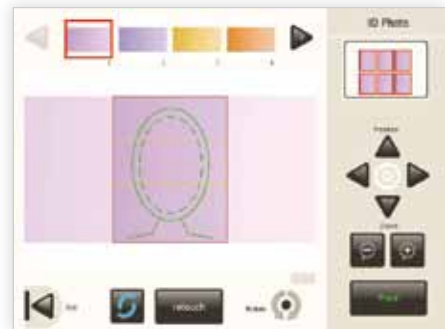
This solution is aimed at professional photographers, as an affordable studio solution. The idea behind Studio Pro is to control the photography process from the moment the image is captured up to the final touches, offering high quality photos in a variety of different sizes in professional environments.



easy photo-ID70



Touch Screen



Services

Instant prints



Various sizes

CD/DVD



Keep your favourite photos

ID photo



ID photo
Different size masks

Instant prints

Compact design

Easy to use

Cost effective

ID photo

Mitsubishi's Easy Photo-ID70 provides a complete, cost effective, one stop digital photo printing solution for small to medium sized retailers. Similar to Easyphoto, Mitsubishi's Easy Photo-ID70 is an instant photo printing system that offers a range of services including instant photo printing, ID photo printing (different nationality ID templates available, compatible with UK and USA ID photos) and CD/DVD burning. Easy to install and operate, this photo system has been designed for operators use and consists of a touchscreen monitor, new software programme and one of Mitsubishi's quickest dye sublimation printers - the CP-D70DW-U. Compact in design but quick in speed Easy Photo-ID70 provides vibrant, bleed to edge photos in seconds and can fit discreetly into any installation environment. Ideal for independent retailers, the ID automatic detection setting identifies images immediately, whilst the multi-copy tool enables the production of instant ID photos, simpler and faster than ever before.



Operators can now upload images from a PTP protocol and edit the ID photos from one single screen. It is that easy, it is that simple!



Easy Photo-ID70 has been designed for simple use:

- Easy to Install: Plug and Play
- Easy to Use: Simple and Friendly
- Compact, sleek design: Can fit discreetly into any location
- Instant prints: Mitsubishi's CP D70DW-U printer produces high quality photos in seconds

Software included

- Prints from all major media cards, USB, PTP protocol and CD/DVD
- Class leading printer providing high quality 4" x 6" photographs in seconds

- Production up to 400 prints/hour (max 1 printer CP-D70DW-U)
- Bio-metric software automatically adjusts images to fit passport requirements
- Advanced input device: PTP protocol compatibility using USB connection for mass storage
- Different layouts: users can add new formats and includes the latest composition files
- Simple workflow function: adjustments can be made on just one single screen
- Multi-copy: print multiple ID photos quickly and easily
- Automatic source: operators can select the automatic functions in order to make the workflow quicker and easier

Optional Software and accessories:

- Optional calendar, collage and mosaic functions
- Optional in-store point of sale material is available
- Receipt printer & validation keyboard

Features:

- Biometric masks for ID photos
- Compact design terminal
- 10" touch screen
- Copies CD's and DVD's

Return on Investment Calculator

		Per Year
Average number of ID photos per day	5	1550
Average number of 4" x 6" photos per day	15	4650
Average number of days open per year	310	
Price per ID photo	£5.50	£8,525.00
Price per 4" x 6" photo	£0.30	£1,395.00
Equipment cost	£1,499.00	
Turn over year one		£9,920.00
Net income year one		£8,421.00

All price quotes exclude VAT. All figures quoted in the ROI are based on 'approximates' and are designed as a guide only. Actual ROI achieved is dependent on number of actual trading days and sales.

The Easy Photo-ID70 starter kit includes a NEW touch screen terminal and ID module, a NEW CP-D70DW-U dye sublimation photo printer and 12 rolls of 4" x 6" media (4,800 prints) with an estimated street value of £1,934 + VAT for **ONLY £1,499 + VAT!!!**



Touch Screen



Services

Instant prints

CD/DVD

Compositions

Easycalendar



Various sizes



Keep your favourite photos



ID photo
Different size masks



Calendars (Annual – 12 months on 1 page)
Easycalendar (1 page per month)
Various sizes and designs

Independent retailers

Customer operated

Compact design

Easy to use

Cost effective

A complete, flexible and affordable photo solution that has been designed with pharmacies and independent retailers in mind Easyphoto is an all in one instant photo printing and ID photo solution. Producing beautiful, clear, full colour bleed to edge photographs in a matter of seconds Easyphoto uses bio-metric software to assist with your ID and passport photos.

Quick and easy to set up and operate, Easyphoto can be customised to suit any application.

With Easyphoto:

- You choose which services you offer
- You choose how much you want to invest

It is that easy. It is that simple!

Easyphoto comes in a sleek compact design, with an independent printer that can be placed on or behind a counter providing retailers with control over output.



Easyphoto has been designed for simple use:

- Easy to Install: Plug and Play
- Easy to Use: Simple and Friendly
- Compact, sleek design: Can fit discreetly into any location
- Instant prints: Mitsubishi's CP9550DW-S printer produces high quality photos in seconds
- Bio-metric software automatically adjusts images to fit passport requirements

Software included

- Prints from all major media cards, USB CD/DVD and Bluetooth mobile phones

- Class leading printer capable of printing 6" x 4", 5" x 7" and 6" x 9" high quality photographs in seconds
- Production up to 240 prints/hour (max 1 printer CP9550DW-S)
- One touch adjustment of images – Re-crop, B&W, sepia, red eye correction, brightness & contrast adjustment, auto colour correction
- Framing and zoom
- Printing with ICC profiles
- Optional calendar, collage and mosaic functions
- Bio-metric software automatically adjusts images to fit passport requirements

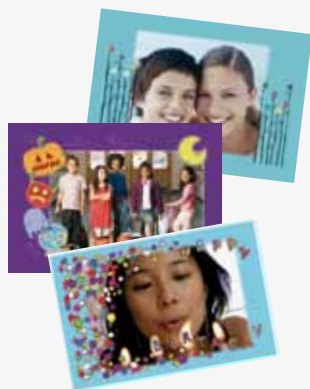
Optional Software and accessories:

- Optional calendar, collage and mosaic functions
- Optional in-store point of sale material is available
- Receipt printer & validation keyboard

Features:

- Compact design: (w x d x h): 300 x 250 x 200mm
- Weight: 7kg
- Software: New Easyphoto Software
- Screen: 10" LCD touch screen

Frames and greetings



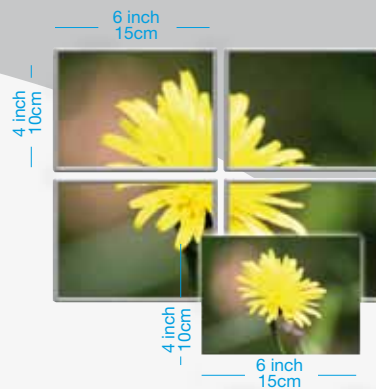
Various sizes and designs

Collage



Various sizes

Mosaic poster

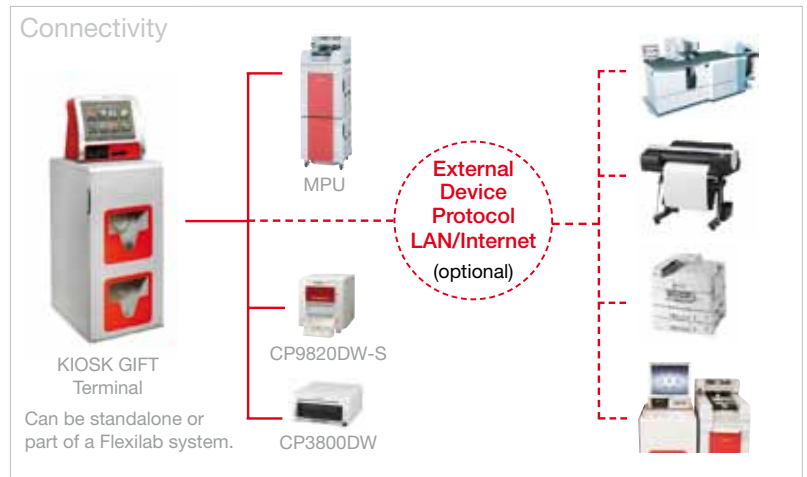


Various options
Composition: 2 x 2 or 2 x 3

KIOSK gift



Touch Screen



Services

Instant prints

CD/DVD

Compositions

Collage



Various sizes



Keep your favourite photos



Different size masks



Various sizes

Independent retailers

Customer operated

Compact design

Easy to use

Cost effective

Mitsubishi's Kiosk Gift takes digital photography solutions to a new level by meeting the needs of small to medium sized retailers that are looking to offer a flexible instant photo and photo gift printing solution, which is expandable and can grow with the businesses needs.

Retailers can offer instant prints, editing options to decorate and produce simple calendars and frames. Customers can also carry out one touch adjustments of images including re-cropping, B&W, sepia, red eye correction, brightness & contrast adjustment and auto colour correction, as well as burn images to CD/DVD.

The Kiosk Gift allows customers to quickly and easily create digital albums and calendars in-store with their most treasured photographs. The retailer has the option of creating the full album or calendar in-store or alternatively the customer can print their photos, purchase the album or calendar and create in the comfort of their own home.

The intuitive touch screen design of the Kiosk Gift ensures it is easy to operate, enabling customers to complete their own order without the need for specialist trained staff in-store.

As a flexible option the Kiosk Gift can either be used as an over the counter service or as part of Mitsubishi's Flexilab solution.



Users can design their own easyalbum and easycalendar comfortably at home and just print them in the nearest Mitsubishi Kiosk.



www.kioskgifts.com

A new world of photo-finishing options connecting the Kiosk Gift to a wide range of external devices.

The Kiosk Gift has been designed as an expandable solution:

- Easy to Use: Simple and Friendly
- Compact, sleek design: Can fit discreetly into any location
- Instant prints: Mitsubishi's CP-D70DW-S, CP-D707DW-S, CP9550DW-S and CP9820DW-S printers produce high quality photos in seconds, whilst the CP3800DW or CP3020DAE are designed for larger sized prints
- Over the counter: Ideal for independent to medium sized retailers
- Flexilab: The Kiosk Gift is an expandable system and can be used to create a complete, full service in-store digital lab solution

Software included:

- Prints from all major media cards, USB CD/DVD and Bluetooth mobile phones
- Class leading printer capable of printing 6" x 4", 5" x 7", 6 x 8" and 6" x 9" high quality photographs in seconds
- An expandable solution extra printers can be connected for multifomat printing (CP-D70DW-S, CP-D707DW-S, CP9550DW-S, CP9820DW-S and CP3800DW or CP3020DAE – for large 8" x 10" and 8" x 12" prints)
- One touch adjustment of images – Re-crop, B&W, sepia, red eye correction, brightness and contrast adjustment, auto colour correction

- Framing and zoom
- Decoration functions, calendars, frames and ID photos

Optional Software and accessories:

- Optional in-store point of sale material is available

Features:

- Compact design: 400 x 400 x 260mm (terminal)
- Weight: 18kg (terminal)
- Operation: 17" touch screen

Easyalbum



Various sizes

Easycalendar



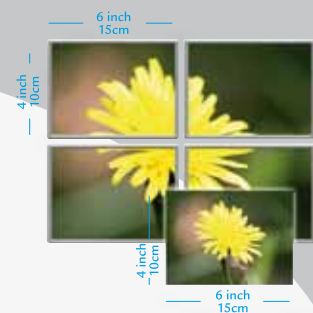
Various sizes

Frames and greetings



Various sizes

Mosaic poster



Various options
Composition: 2 x 2 or 2 x 3

pocketbook maker



Size
4" x 6"



Services

Instant Pocketbooks



Full range of services available when
connected to a Flexilab solution

Simple to operate

High production

Flexible

Customisable

Adaptable

Enhancing Mitsubishi's retail offering is 'Pocketbook Maker' – the easy way to share! In only three steps customers can create a fun photo pocket book that can be given as a gift or kept to remember holidays and special moments. The easy to follow instructions allow customers to select a theme, decide which pictures they want to use from their media card and choose the cover image and title for their pocket book. The Mitsubishi software will create a stunning reportage design to make every Pocketbook unique and special. The customer can preview the design and edit their book before printing; images can be moved or swapped and text added to individual pages.

Mitsubishi's Pocketbook is available as 4" x 6" print format and customers have the option of choosing between 10 to 30 pages per book. There are a variety of layouts and themes available and once the customer is happy their pocket book will be automatically completed in approximately 5 minutes. Pocketbook Maker is an ideal solution for supermarkets, gift stores, theme parks, shopping centres, pharmacies and photographic shops. It can be purchased as a stand alone unit or connected to a full Mitsubishi Flexilab solution for customers looking at expanding their stores services.



Printed in 5 mins.

CLICK 5000



Touch Screen



- Photography tasks
- Photo ID
- Events
- Digital camera
- CD/DVD
- Mobile telephone
- Film scanning
- Copy to copy
- Scanner

Connectivity



Services

Instant prints

CD/DVD

Compositions

Collage



Various sizes



Keep your favourite photos



ID photo
Different size masks



Various sizes

Medium to large sized retailers

Staff operated

Compact design

Easy to use

Value added services available

Cost effective digital micro lab solution

Mitsubishi's Click IT5000 is the ideal solution for retailers that want to be able to offer instant prints as well as high volume digital printing services. An expandable solution the Click IT5000 grows with the needs of the retailer and can be connected to a maximum of 6 dye sublimation printers as well as a film or flatbed scanner. It can provide customers with a range of services including cropping, cloning and retouching images, reframing, colour filtering, the elimination of red-eye and the restoration of old photos. Click IT5000 also allows for the decoration of customers' images with text, clipart and collaging, as well as postcard and personalised frames and calendars.

Easy to set up and operate the Click IT5000 forms the central control for Mitsubishi's Flexilab solution. Managing the customer's photos and workflow, print jobs are queued correctly and jobs printed in time whether it be instant prints, photo gifts or a large volume print jobs, providing the retailer with a complete in-store digital production system.

The Click IT5000 has been designed as an expandable production solution:

- Easy to Use: Simple and Friendly
- Instant prints: Up to 6 Mitsubishi printers can be connected for multiformat printing
- Flexilab: Mitsubishi's Dispatcher software has been designed for the Click IT5000. As an expandable system Dispatcher will queue and prioritize print jobs accordingly providing a complete, full service in-store digital micro lab solution to manage customer print orders from kiosk to the dispatcher

Software included:

- Prints from all major media cards, USB CD/DVD and Bluetooth™ mobile phones

- Class leading printer capable of printing 6" x 4", 5" x 7", 6" x 8" and 6" x 9" high quality photographs in seconds
- An expandable solution extra printers can be connected for multiformat printing (CP-D70DW-S, CP-D707DW-S, CP9550DW-S, CP9820DW-S and CP3800DW or CP3020DAE – for large 8"x10" and 8"x12" prints)
- One touch adjustment of images – Re-crop, B&W, sepia, red eye correction, brightness & contrast adjustment, auto colour correction
- Decoration functions, personalised calendars, frames and ID photos
- Dispatcher software for a complete in-store Flexilab and connection to customer facing order terminals

Optional Software and accessories:

- Optional in-store point of sale material is available
- A Film or Flatbed scanner can be connected for the restoration of old photographs and digitalization*

Features:

- Compact design: 400 x 400 x 260mm (terminal)
- Weight: 18kg (terminal)
- Operation: 17" touch screen

*Not supplied by Mitsubishi Electric

Easyalbum



Various sizes and designs

Easycalendar



Various sizes and designs

Frames and greetings



Various sizes and designs

Pocketbook



When Pocketbook Maker is connected as part of a Flexilab or Click System

MPU (Mass Production Unit)

A Complete Drylab Solution from Mitsubishi

Printing has never been automated in such a profitable, easy way that takes up so little space.

The MPU printing system only takes up 0.26sqm, and it includes two state-of-the-art printers that act as a single production unit, producing copies measuring 4" x 6", 5" x 7", 6" x 8", 6" x 8.4", 6" x 9", and reaching a production rate of 800 copies/hour (4" x 6" format)

The system can distinguish intellectually between the printers according to the paper format available in each printer, sending the orders to the target printers, so as to then process the order grouping it by picture order and by order group in the classifier.



The MPU has been designed as a full dry lab solution:

- Easy to Use: Simple and Friendly
- Full production system:
The MPU organises customers orders effectively
- Back printing: Unique serial numbers are printed on the back of print jobs to avoid print overlaps or mistakes. The print method used is:
 - Serial dot impact
 - Printable character: 1byte code character
 - Printable character number: 40 characters x 2 lines

- High quality prints: The MPU comes with two CP9820DW-S high speed printers offering 4" x 6", 5" x 7", 6" x 8" and 6" x 9"
- Instant prints: Large print jobs can be interrupted for instant printing
- Flexilab: The MPU can be connected to Mitsubishi's Click IT5000 an expandable system Dispatcher software will queue and prioritise print jobs accordingly providing a complete, full service in-store digital micro lab solution
- Print Stacker & Belt sorter
- Throughput: Approx 800 4" x 6" prints per hour

Optional Software and accessories:

- Optional in-store point of sale material is available

Features:

- Compact design: 423 x 1309 x 604
- Weight: 80kg (approx)
- Operation: Via Click IT5000



Classifier - management control

The orders are stacked individually so that the finished order can be given directly to the client, making collection easier.

Scalable

Up to two MPU's can be connected together at the same system and in this case the production rate would be 1.450 copies 4 x 6 inch/per hour.

Also, we can connect up to four independent printers for special formats.



Top tray, enlarged and priority orders

All orders sent to be printed with the label "urgent", will be fed out into the top tray.

The copies sized 5 x 7 inch and 6 x 8 inch, 6 x 8.4 inch, 6 x 9 inch are also sent to that tray, thus keeping all professional or priority jobs separate from the rest.



Backprint

Facilitates picture identification once printed, including order codes so that the printing jobs can be identified.



Finish

Without having to change the paper, the equipment is prepared to process gloss finish or "soft pearl effect". This exclusive Mitsubishi finish provides a professional touch to amateur photographs.

FLEXILAB



Flexilab is scalable and can grow as your photo printing grows. You can specify different Flexilab installations according to your business requirements.

2-1-2

- 2 x customer order terminals (Kiosk Gift)
- 1 x Click IT5000 central management system
- 2 x Dye sublimation printers for multiformat printing or MPU
- Production: Up to 50,000 print a year upwards

3-1-4

- 3 x customer order terminals (Kiosk Gift)
- 1 x Click IT5000 central management system
- 4 x Dye sublimation printers for multiformat printing (MPU and two stand alone printers)

- Production: Up to 100,000 prints per year upwards

5-1-2

- 5 x customer order terminals (Kiosk Gift)
- 1 x Click IT5000 central management system
- 2 x Dye sublimation printers for multiformat printing or MPU
- Production: Up to 50,000 print a year upwards

5-1-3

- 5 x customer order terminals (Kiosk Gift)
- 1 x Click IT5000 central management system

- 3 x Dye sublimation printers for multiformat printing (MPU and one stand alone printer)

- Production: Up to 80,000 prints per year upwards

5-1-5

- 5 x customer order terminals (1 x Kiosk Gift for Pocketbook Maker)
- 1 x IT5000 central management system
- 5 x Dye sublimation printers for multiformat printing (MPU and two stand alone printers and one for Pocketbook Maker)

Medium to large sized retailers

Staff operated

Compact design

Easy to use

Value added services available

Cost effective full production system

Mitsubishi's Flexilab production system has been designed as a flexible solution which offers all the services of a minilab, cost effectiveness and profits from the first day. An expandable system Flexilab can grow with the needs of your business with a number of different configurations available, some of the configurations are shown opposite:

Benefits of a Flexilab solution

- Production capacity: This system is fully adaptable to meet the needs of your business and can cope with up to 1750 prints/hour with 5 printers
 - Instant services: Orders taken at the counter and delivered in an instant
 - Self-service: The order terminals ensure that customers can place their orders quickly, easily and independently, to reduce queues and encourage users to collect their photos from the counter
 - Multiple sizes: Basic formats 4" x 6", 5" x 7", 6" x 8", 6" x 8.5", 6" x 9", exclusive digital format 4.5"x6" and enlargements of 8"x10", 8"x12" with optional printer available.
 - Additional services: CD/DVD burning, retouching, red-eye reduction, personalised calendars, frames, passport photos and gifts are available
 - 24h services: Images can be sent to external laboratories or minilabs for matt or large-format printing services
- *Production figures are for illustration purposes and will depend on individual business levels.

**Mitsubishi solutions are fully extendable and updateable
High production and numerous services within your reach**





EASYPHOTO-ID70	
Screen size	10.4" Touch screen
System	Celeron 2.2Ghz, RAM 1Gb, 4Gb CF
Dimensions (w x h x d)	Open: 253 x 369 x 300mm / Closed: 253 x 164 x 300mm
Weight (terminal)	7.5kg
Reading/input	Compact Flash type I/II, Smart media, Memory stick / MS PRO, Secure Digital Card, MM Card, IBM micro drive, Mini SD card, Memory stick DUO, XD card, USB, CD / DVD Rom, Bluetooth™ for telephone
Basic functions in photograph processing	Red eye correction, Cut, Frame, Zoom, Merger, Light, Contrast, Colour / Sepia / Black and White, Colour regulation according to ICC profiles
Picture history	NO
Carrousel function	NO
Remote maintenance	NO
Iq software (regulating image quality for all printers)	NO
Mitsubishi colour check-up kit matching (screen adjustment)	NO
Statistics (local or remote)	Local
Possibility of scanner connection	NO
Receipt printer	OPTIONAL
Keyboard	NO
Compatibility with Mitsubishi Flexilab	NO
Compatible printers	
Maximum number of printers connected	1
Printing formats available in cm	10x15
Printing formats available in inch	4x6
Optional pedestal stand	
Measurements (w x h x d)	365 x 985 x 580mm
Net weight	29kg

EASYPHOTO-ID70	
Basic EasyID system	
Copies: ID photo different size masks	
Recording on DVD/CD	
Optional Easy Photo-ID70 services	
Easygreetings (optional) Greetings & Frames	
Easycollage (optional) Collage 4 x 6 inch	
Easymosaic (optional) MOSAIC POSTER Made up of various photos cut out of one and the same picture	
Easycalendar (optional) Calendars (Annual – 12 months on one page) Easycalendar (1 page per month) 4 x 6 inch	
Easypackdeco Easyphoto Software Pack Deco (optional)	
Includes following functions: EASYCALENDAR Easygreetings Easycollage Easymosaic	
Basic EasyID System Operator mode only	



systems

EASYPHOTO MT1E	KIOSK GIFT PT7000E	CLICK IT5000E
10.4" Touch screen	17" Touch screen	17" Touch screen
Celeron 2.2Ghz, RAM 1Gb, 4Gb CF	Core 2 Duo 1.8Ghz (or higher), RAM 2Gb, HDD 250Gb	Core 2 Duo1.8GHz (or higher), RAM 2Gb, HDD 250Gb
Open: 253 x 369 x 300mm / Closed: 253 x 164 x 300mm	435 x 440 x 306mm	400 x 410 x 256mm
7.5kg	17.5kg	18kg
Compact Flash type I/II, Smart media, Memory stick / MS PRO, Secure Digital Card, MM Card, IBM micro drive, Mini SD card, Memory stick DUO, XD card, USB, CD / DVD Rom, Bluetooth™ for telephone	Compact Flash type I/II, Smart media, Memory stick / MS PRO, Secure Digital Card, MM Card, IBM micro drive, Mini SD card, Memory stick DUO, XD card, USB, CD / DVD Rom, Bluetooth™ for telephone	Compact Flash type I/II, Smart media, Memory stick / MS PRO, Secure Digital Card, MM Card, IBM micro drive, Mini SD card, Memory stick DUO, XD card, USB, CD / DVD Rom, Bluetooth™ for telephone
Red eye correction, Cut, Frame, Zoom, Merger, Light, Contrast, Colour / Sepia / Black and White, Colour regulation according to ICC profiles	Red eye correction, Cut, Frame, Zoom, Merger, Light, Contrast, Colour / Sepia / Black and White, Colour regulation according to ICC profiles	Red eye correction, Cut, Frame, Zoom, Merger, Light, Contrast, Colour / Sepia / Black and White, Colour regulation according to ICC profiles
NO	NO	YES
NO	NO	YES
NO	YES	YES
NO	YES	YES
NO	OPTIONAL	OPTIONAL
Local	Local and Remote	Local and remote
NO	NO	YES
OPTIONAL	OPTIONAL	NO
OPTIONAL	YES	OPTIONAL
OPTIONAL	YES	SERVER
CP-D70DW-U	CP9550DW-S, CP9600DW-S, CP9820DW-S, CP3800DW, CP-D70DW-S, CP-D707DW-S, MPU	CP9550DW-S, CP9600DW-S, CP9820DW-S, CP3800DW, CP-D70DW-S, CP-D707DW-S, MPU
1	2	6
10 x 15 - 11.5 x 15 - 13 x 18 - 15 x 20 - 15 x 21 - 15 x 23	10 x 15 - 11.5 x 15 - 13 x 18 - 15 x 20 - 15 x 21 - 15 x 23 - 20 x 25 - 20 x 30	10 x 15 - 11.5 x 15 - 13 x 18 - 15 x 20 - 15 x 21 - 15 x 23 - 20 x 25 - 20 x 30
4 x 6 - 4.6 x 6 - 5 x 7 - 6 x 8 - 6 x 8,4 - 6 x 9	4 x 6 - 4.6 x 6 - 5 x 7 - 6 x 8 - 6 x 8,4 - 6 x 9 - 8 x 10 - 8 x 12	4 x 6 - 4.6 x 6 - 5 x 7 - 6 x 8 - 6 x 8,4 - 6 x 9 - 8 x 10 - 8 x 12
Easypedestal	Flexidesk	Flexidesk
365 x 985 x 580mm	610 x 1045 x 470mm	610 x 1045 x 470mm
29kg	55kg	55kg
EASYPHOTO Basic Easyphoto System	KIOSK GIFT Kiosk Gift Base System	CLICK Basic Click System
Copies: Composition, printing the same photo several times, index printing, photo editing.	Copies: Composition, printing the same photo several times, index printing, photo editing.	Copies: Composition, printing the same photo several times, index printing, photo editing.
Recording on DVD/CD	Copy to copy (Requires Scanner)	Film scanning (Requires Scanner)
Optional Easyphoto services	Recording on DVD/CD	Copy to copy (Requires Scanner)
Easygreetings (optional) Greetings & Frames	Easycalendar Calendars (Annual – 12 months on one page)	Recording on DVD/CD
Easycollage (optional) Collage 4 x 6 inch, 5 x 7 inch, 6 x 9 inch	Easycalendar (1 page per month) 4 x 6 inch, 5 x 7 inch, 6 x 9 inch	Calendars (Easycalendar) Calendars (Annual – 12 months on one page)
Easymosaic (optional) MOSAIC POSTER Made up of various photos cut out of one and the same picture	Easyalbum Easyalbum 4 x 6 inch, 5 x 7 inch, 8 x 10inch	Easycalendar (1 page per month) 4 x 6 inch, 5 x 7 inch, 6 x 9 inch
Easycalendar (optional) Calendars (Annual – 12 months on one page) Easycalendar (1 page per month) 4 x 6 inch, 5 x 7 inch, 6 x 9 inch	Greetings and Frames Greetings & Frames: Different layouts and themes	Professional work Photographic decoration, Greetings & Frames Photography touch-ups
EasyID (optional) ID photos Different size masks	Collage Collage of several pictures with different layouts	Events Decorate Edit Put into order Print copies Chroma Key Ornamental borders Red eye correction (professional and adjustable acc. to tone)
Easypackdeco Easyphoto Software Pack Deco (optional)	Mosaic Poster mosaic: Composition 2 x 2 or 2 x 3	Photo ID ID photos
Includes following functions: EASYCALENDAR Easygreetings Easycollage Easymosaic	Compositions Different mask sizes for the same picture	Optional Click services
EasyOT (optional) Software for using the MT1E as Order Terminal	Home Edition Internet / External Device protocol Optional Kiosk Gift services DPS CALENDAR CREATOR (optional) Create and personalise new calendar models	SWALBUM (optional) Professional Easyalbum 4 x 6 inch, 5 x 7 inch, 6 x 9 inch DPS CALENDAR CREATOR (optional) Create and personalise new calendar models

Thermal Sublimation Printing



systems

Reference	Pocketbook Maker	MPU	CP9550DW-S	CP9600DW-S
Characteristic	Professional Pocketbook Maker for Kiosk or Flexilab	This multi print unit includes two thermal sublimation printers (CP9820DW-S) for Mitsubishi CLICK or Kiosk Gift development systems.	Professional thermal sublimation photographic printer for the Mitsubishi EASYPHOTO, KIOSK or CLICK development systems.	Professional thermal sublimation photographic printer for the Mitsubishi KIOSK or CLICK development systems.
Resolution	300 DPI	300 DPI	346 DPI	600 DPI (High Resolution) 300 DPI (Normal)
Time per print*	aprox. 5 mins per pocket book	4 sec. (4 x 6 inch - 10 x 15cm)	5.9 sec. (4 x 6 inch - 10 x 15cm)	8.4 sec. (4 x 6 inch - 10 x 15cm) 32 sec. (4 x 6 inch - 10 x 15cm)
Memory	Mini-TX Motherboard (Intel ATOM CPU Family) 160Gb HDD (3.5 "or 2.5") 1Gb RAM	4 x 32 MB	2 x 32 MB	2 x 32 MB
Interface	USB2.0	USB2.0	USB2.0	USB2.0
Paper type	Roll	Roll	Roll	Roll
Paper surface	Gloss	Gloss / Semi Matt	Gloss	Gloss
Printing rate per hour	374 (4 x 6 inch - 10 x 15cm)	800 (4 x 6 inch - 10 x 15cm)	232 (4 x 6 inch - 10 x 15cm)	116 (4 x 6 inch - 10 x 15cm)
Compatibility system	KIOSKGifts system with PT7000E, CLICK with IT5000E (if the design of the album was accomplished via Kiosk Gift)	Mitsubishi CLICK and KIOSK	Mitsubishi CLICK and KIOSK and MT1E for Easyphoto	Mitsubishi CLICK and KIOSK
Power supply	120 VCA 50/60 Hz, 220-240 VCA 50/60 Hz	120 V AC 50/60 Hz, 220 -240 V AC 50/60 Hz,	120 V AC 50/60 Hz, 220 -240 V AC 50/60 Hz,	AC 220-240V 50-60Hz
Electricity consumption	10 A (220-240 VCA 50/60 Hz)	P12 A (120 V AC 50/60 Hz), 7,5 A (220 -240 V AC 50/60 Hz),	Printing: 2,9 A Standby : 0,4 A (120V AC 50/60 Hz), 0,3 A (220 -240 V AC 50/60 Hz),	PPrinting: 1,6 A (220-240V AC 50/60Hz) Standby : 0,3 A (220-240V AC 50/60Hz)
Dimensions (W x H x D)	620 x 1200 x 1040 mm	423 x 1309 x 604mm	300 x 325 x 365mm	300 x 325 x 365mm
Weight	195kg	80kg	17kg	17kg

	4 x 6 inch - 10 x 15cm	Pocket Album Approx. 5 min. 5 sheets R / V 1 sheet - 2 x 102x152 mm.high grade media	Approx. 4 sec.	Approx. 16 sec.	Approx. 57 sec.
PAPER	5 x 7 inch - 13 x 18cm	-	Approx. 8 sec.	Approx. 25 sec.	Approx. 12.7 sec.
Speed	6 x 8 inch - 15 x 20 cm	-	-	-	Approx. 14.5 sec.
size	6 x 9 inch - 15 x 23cm	-	Approx. 16 sec.	Approx. 30 sec.	-
	8 x 10 inch - 20 x 25cm	-	-	-	-
	8 x 12 inch - 20 x 30cm	-	-	-	-

	Roll 600 prints (CK9015) Glue 600 runs (PMG-1015)	CK9015: 1200 copies (4 x 6 inch - 10 x 15cm)	CK9015: 600 copies (4 x 6 inch - 10 x 15cm)	CK9015: 600 copies (4 x 6 inch - 10 x 15cm)
	-	CK9318: 700 copies (5 x 7 inch - 13 x 18cm)	CK9318: 350 copies (5 x 7 inch - 13 x 18cm)	CK9318: 350 copies (5 x 7 inch - 13 x 18cm)
	-	CK9523: 540 copies (6 x 9 inch - 15 x 23cm)	CK9523: 270 copies (6 x 9 inch - 15 x 23cm)	CK9523: 270 copies (6 x 9 inch - 15 x 23cm)
CONSUMABLE	-	CK9015HG: 1200 copies (4 x 6 inch - 10 x 15cm)	-	-
Number of	-	CK9318HG: 700 copies (5 x 7 inch - 13 x 18cm)	-	-
printssize	-	CK9523HG: 540 copies (6 x 9 inch - 15 x 23cm)	-	-

* Please note users can customise the size of their prints, offering a variety of different sized prints from the standard specifications. Printers have a paper cutting system. * Visit vis.mitsubishielectric.co.uk/products/printers/drivers for all compatible drivers.



system printers

mac/pc/mitsubishi systems

mac/pc

CP9820DW-S	CP-D70DW-S	CP-D707DW-S	CP3800DW	CP9550DW
Professional thermal sublimation photographic printer for the Mitsubishi KIOSK or CLICK development systems.	Professional thermal sublimation Photographic printer for Mitsubishi KIOSK or CLICK development systemsSingle-deck.	Professional thermal sublimation Photographic printer for Mitsubishi KIOSK or CLICK development systemsDouble-deck.	Professional thermal sublimation photographic printer for PC/MAC and Mitsubishi systems. Bleed printing and paper on reel.	Professional thermal sublimation photographic printer for PC/MAC.
300 DPI	300 DPI	300 DPI	300 DPI or 600 DPI	346 DPI
8 sec. (4 x 6 inch - 10 x 15cm)	8.4 sec. (4 x 6 inch - 10 x 15cm)	5.9 sec. (4 x 6 inch - 10 x 15cm)	50 sec. (8 x 10 inch - 20 x 25cm)	16 sec. (4 x 6 inch - 10 x 15cm)
2 x 32 MB	2 x 32 MB	2 x 32 MB	2 x 32 MB	2 x 32 MB
USB2.0	USB2.0	USB2.0	USB2.0	USB2.0
Roll	Roll	Roll	Roll	Roll
Gloss / Matt	Gloss	Gloss	Gloss / Matt	Gloss
374 (4 x 6 inch - 10 x 15cm)	-	-	74 (8 x 10 inch - 20 x 25cm)	232 (4 x 6 inch - 10 x 15cm)
Mitsubishi CLICK and KIOSK	CLICK and KIOSK Mitsubishi	CLICK and KIOSK Mitsubishi	Windows® and MAC	Windows® and MAC
120 V AC 50/60 Hz, 220-240 V AC 50/60 Hz,	120 V AC 50/60 Hz, 220-240 V AC 50/60 Hz	120 V AC 50/60 Hz, 220-240 V AC 50/60 Hz	120 V AC 50/60 Hz, 220-240 V AC 50/60 Hz,	120 V AC 50/60 Hz, 220-240 V AC 50/60 Hz,
Printing: 0,4 A (120 V AC 50/60 Hz), 2,5 A (220-240 V AC 50/60 Hz) Standby: 0,4A (120V AC 50/60Hz) 0,4A (120-240V AC 50/60Hz)	Printing: 4,6 A (120VAC 50/60Hz) 2,4 A (220-240VAC 50/60Hz) Stand by: 0,5 A (120 V AC 50/60 Hz)	Printing: 5,1 A (120VAC 50/60Hz) 2,6 A (220-240VAC 50/60Hz) Stand by: 0,5 A (120 V AC 50/60 Hz)	3,96A (120 V AC 50/60 Hz.) 1,7 A (220-240 V AC 50/60 Hz),	Printing: 2,9 A (120V AC 50/60Hz) 1,6A (220-240V AC 50/60H) Standby: 0,4 A (120 V AC 50/60 Hz), 0,3 A (220-240 V AC 50/60 Hz),
329 x 383 x 404mm	275 x 170 x 446 mm	275 x 340 x 446 mm	322 x 170 x 366mm	300 x 325 x 365mm
21kg	12 kg	22 kg	14kg	17kg
Approx. 8 sec.	Approx. 8.4 sec.	Approx. 57 sec.	-	Approx. 16 sec.
Approx. 16 sec.	Approx. 12.7 sec.	Approx. 9.4 sec.	-	Approx. 25 sec.
Approx. 18 sec.	Approx. 14.5 sec.	Approx. 10 sec.	-	Approx. 30 sec.
-	-	-	Approx. 30 sec.	-
-	-	-	Approx. 35 sec.	-
-	-	-	-	-
CK9015: 600 copies (4 x 6 inch - 10 x 15cm)	CK-D715: 400 copies (4 x 6 inch - 10 x 15cm)	CK-D715: 400 copies (4 x 6 inch - 10 x 15cm)	CK9046: 600 copies (4 x 6 inch - 10 x 15cm)	CK9046: 600 copies (4 x 6 inch - 10 x 15cm)
CK9318: 350 copies (5 x 7 inch - 13 x 18cm)	CK-D718: 230 copies (5 x 7 inch - 13 x 18cm)	CK-D718: 230 copies (5 x 7 inch - 13 x 18cm)	CK9057: 350 copies (5 x 7 inch - 13 x 18cm)	CK9057: 350 copies (5 x 7 inch - 13 x 18cm)
CK9523: 270 copies (6 x 9 inch - 15 x 23cm)	CK-D720: 200 copies (6 x 8 inch - 15 x 20cm)	CK-D720: 200 copies (6 x 8 inch - 15 x 20cm)	-	CK9069: 270 copies (6 x 9 inch - 15 x 23cm)
CK9015HG: 600 copies (4 x 6 inch - 10 x 15cm)	CK-D723: 180 copies (6x9 inch - 15 x 23 cm)	CK-D723: 180 copies (6x9 inch - 15 x 23 cm)	-	CK9046PST: 600 copies (postcard) (4 x 6 inch - 10 x 15cm)
CK9318HG: 600 copies (5 x 7 inch - 13 x 18cm)	-	-	-	-
CK9523HG: 600 copies (6 x 9 inch - 15 x 23cm)	-	-	-	-

Thermal Sublimation Printing



mac/pc

Reference	CP9600DW	CP9810DW	CP-D707DW	CP-D70DW	
Characteristic	Professional thermal sublimation photographic printer for PC/MAC.	Professional thermal sublimation photographic printer for PC/MAC.	Professional thermal sublimation Photographic printer for PC/MAC Double-deck.	Professional thermal sublimation Photographic printer for PC/MAC Single-deck.	
Resolution	00 DPI (High Resolution) 300 DPI (Normal)	300 DPI	300 DPI	300 DPI	
Time per print*	32 sec. (4 x 6 inch - 10 x 15cm)	8 sec. (4 x 6 inch - 10 x 15cm)	5.9 sec. (4 x 6 inch - 10 x 15cm)	8.4 sec. (4 x 6 inch - 10 x 15cm)	
Memory	2 x 32 MB	2 x 32 MB	2 x 32 MB	2 x 32 MB	
Interface	USB2.0	USB2.0	USB2.0	USB2.0	
Paper type	Roll	Roll	Roll	Roll	
Paper surface	Gloss	Gloss / Matt	Gloss	Gloss	
Printing rate per hour	116 (4 x 6 inch - 10 x 15cm)	374 (4 x 6 inch - 10 x 15cm)	-	-	
Compatibility system	Windows® and MAC	Windows® and MAC	Windows® and MAC	Windows® and MAC	
Power supply	AC 220-240V 50-60Hz	120 V AC 50/60 Hz, 220 -240 V AC 50/60 Hz,	120 V AC 50/60 Hz, 220-240 V AC 50/60 Hz	120 V AC 50/60 Hz, 220-240 V AC 50/60 Hz	
Power consumption	Printing: 1,6A (AC 220-240V 50-60 H) Standby : 0,3 A (220 -240 V AC 50-60 Hz),	Printing: 0,4 A (120 V AC 50/60 Hz), 2,5 A (220-240 V AC50/60 Hz) Standby : 0,4A (120V AC 50/60Hz)0, 4A (120-240V AC 50/60Hz)	Printing: 5,1 A (120VAC 50/60Hz) 2,6 A (220-240VAC 50/60Hz) Stand by: 0,5 A (120 V AC 50/60 Hz)	Printing: 4,6 A (120VAC 50/60Hz) 2,4 A (220-240VAC 50/60Hz) Stand by: 0,5 A (120 V AC 50/60 Hz)	
Dimensions (W x H x D)	300 x 325 x 365mm	329 x 383 x 404mm	275 x 340 x 446 mm	275 x 170 x 446 mm	
Weight	17kg	21kg	22 kg	12 kg	
	4 x 6 inch - 10 x 15cm	Approx. 57 sec.	Approx. 8 sec.	Approx. 5.9 sec.	Approx. 8.4 sec.
	5 x 7 inch - 13 x 18cm	Approx. 100 sec.	Approx. 16 sec.	Approx. 9.4 sec.	Approx. 12.7 sec.
PAPER Speed size	6 x 8 inch - 15 x 20 cm	-	-	Approx. 10 sec.	Approx. 14.5 sec.
	6 x 9 inch - 15 x 23cm	Approx. 105 sec.	Approx. 18 sec.	-	-
	8 x 10 inch - 20 x 25cm	-	-	-	-
	8 x 12 inch - 20 x 30cm	-	-	-	-
CONSUMABLE Number of prints size	CK9046: 600 copies (4x6 inch - 10x15cm)	CK9046: 600 copies (4x6 inch - 10x15cm)	CK-D746: 400 copies (4x6 inch - 10x15cm)	CK-D746: 400 copies (4x6 inch - 10x15cm)	
	CK9057: 350 copies (5x7 inch - 13x18cm)	CK9057: 350 copies (5x7 inch - 13x18cm)	CK-D757: 230 copies (5x7 inch - 13x18cm)	CK-D757: 230 copies (5x7 inch - 13x18cm)	
	CK9069: 270 copies (6x9 inch - 15x23cm)	CK9096: 270 copies (6x9 inch - 15x23cm)	CK-D768: 200 copies (6x8 inch - 15x20cm)	CK-D768: 200 copies (6x8 inch - 15x20cm)	
	-	CK9046HG: 600 copies (4x6 inch - 10x15cm)	CK-D769: 180 copies (6x9 inch - 15x23 cm)	CK-D769: 180 copies (6x9 inch - 15x23 cm)	
	-	CK9057HG: 350 copies (5x7 inch - 13x18cm)	-	-	
	-	CK9096HG: 270 copies (6x9 inch - 15x23cm)	-	-	



CP-D70DW-S · CP-D70DW · Single deck

Compact design Narrow and low profile body. Size 275 x 170 x 446mm (W x H x D)

High speed printing 8.4 seconds per copy 4" x 6" inch (10 x 15 cm)

High capacity 400 copies 4" x 6" inch (10 x 15 cm)

High resolution image Clearer and sharper prints. 16 bit image data processing. Resolution 300 dpi

Multiple print sizes From 4" x 6" inch (10 x 15 cm) to 6" x 9" prints (15 x 23cm)



CP-D707DW-S · CP-D707DW · Double deck

Compact design 5.9 seconds per copy 4" x 6" inch (10 x 15 cm)

High speed printing 800 copies 4" x 6" inch (10 x 15cm)

High capacity Supports three different sizes at same time from 4" x 6" inch (10 x 15 cm) to 6" x 9" prints (15 x 23cm)

High resolution image Size 275 x 340 x 446 mm (W x H x D)

Multiple print sizes Clearer and sharper prints. 16 bit image data processing. Resolution 300 dpi



Frontal semi-auto loading Easy paper setting with newly designed Axis-less paper flange

Maintenance cost reduction New dust structure with separate ventilation flow to prevent dust

Ecologic Energy saving Eco-stand by mode only 0,5 W

Photographic paper



Standard and HG paper

Reference	Size*	Copies		Printers
CK-D715	4" x 6" - 10 x 15 cm	400 copies	Roll	CP-D70DW-S CP-D707DW-S
CK-D718	5" x 7" - 13 x 18 cm	230 copies	Roll	
CK-D720	6" x 8" - 15 x 20 cm	200 copies	Roll	
CK-D723	6" x 9" - 15 x 23 cm	180 copies	Roll	
CK-D746	4" x 6" - 10 x 15 cm	400 copies	Roll	CP-D70DW CP-D707DW
CK-D757	5" x 7" - 13 x 18 cm	230 copies	Roll	
CK-D768	6" x 8" - 15 x 20 cm	200 copies	Roll	
CK-D769	6" x 9" - 15 x 23cm	180 copies	Roll	
CK-D746U	4" x 6" - 10 x 15cm	400 copies	Roll	CP-70DW-U
CK9015	4" x 6" - 10 x 15 cm	600 copies	Roll	CP9820DW-S CP9820DW-S CP9550DW-S CP9600DW-S
CK9318	5" x 7" - 13 x 18 cm	350 copies	Roll	
CK9523	6" x 9" - 15 x 23 cm	270 copies	Roll	
CK9015HG (high grade)	4" x 6" - 10 x 15 cm	600 copies	Roll	CP9820DW-S CP9810DW-S
CK9318HG (high grade)	5" x 7" - 13 x 18 cm	350 copies	Roll	
CK9523HG (high grade)	6" x 9" - 15 x 23 cm	270 copies	Roll	
CK9046	4" x 6" - 10 x 15 cm	600 copies	Roll	CP9820DW CP9820DW CP9550DW CP9600DW
CK9057	5" x 7" - 13 x 18 cm	350 copies	Roll	
CK9069	6" x 9" - 15 x 23 cm	270 copies	Roll	
CK9046HG (high grade)	4" x 6" - 10 x 15 cm	600 copies	Roll	CP9820DW CP9810DW
CK9057HG (high grade)	5" x 7" - 13 x 18 cm	350 copies	Roll	
CK9069HG (high grade)	6" x 9" - 15 x 23 cm	270 copies	Roll	
CK3810	8" x 10" - 20 x 25 cm	260 (2 x 130) copies	Roll	CP3800DW
CK3812	8" x 12" - 20 x 30 cm	220 (2 x 110) copies	Roll	

Mitsubishi Electric photographic paper

The Mitsubishi paper has all the standards required for high quality photography printing, and its printing is based on the thermal sublimation technology which is free of liquid chemical residue and is environment-friendly.

The benefits of sublimation technology



No need for chemical processing.



No residue, more ecological.



No storage requirements as it is not a perishable material.



Water resistant and resistant to possible stains.



Long-lasting, thanks to its final lamination, with protection against UV rays, scratches and fingerprints.



It does not require the usual colour adjustments to reduce chemical difference, or of lamps or head pieces.

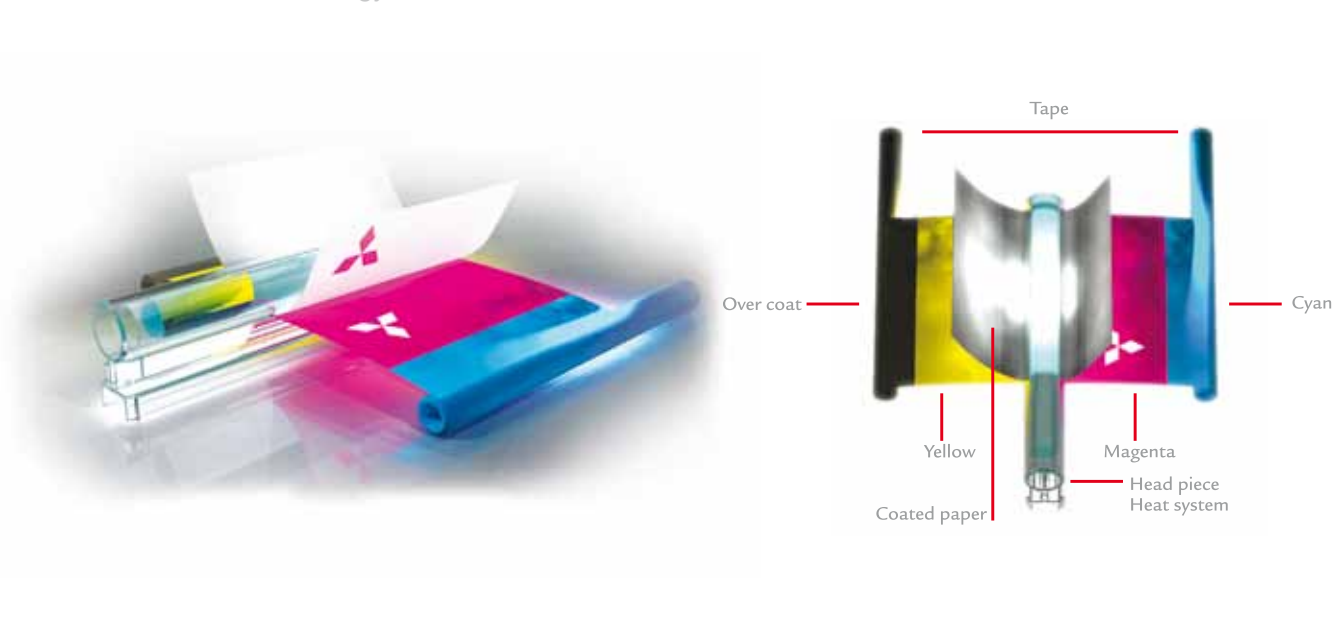


It is not humidity or temperature sensitive, and therefore it can be kept over a long time.

Mitsubishi Electric hg paper

The new type of special paper called "HG" high grade, can reproduce the most professionally demanding colour tones, in terms of colour, density or definition.

Thermal sublimation technology



SW GIFTS

Software Gifts is an intuitive, fast, complete tool for KIOSK.

The new Software Gifts offers the option of printing photographs, composing an Easyalbum and Easycalendar, and creating greetings...



Digital photo

Option already included by default when making instant copies of photographs.



Easycalendar

This option offers the possibility of creating personalised calendars, thanks to the various background and layout options, changing the text font and frames, and writing texts or exchanging photographs each month.



Easyalbum

Create an album, easily and instantly. You can choose between different background scenes and layouts, and insert texts, change frames or change the position of photographs.



Greetings

This module is for personalising greetings with fun themes, such as Christmas, birthdays, births, communions, parties, etc.

SW ALBUM



The Software Album is a simple, fast and flexible tool for CLICK, for composing your Easyalbum.

The Software Album has been designed so that it is easy for professionals to produce a professional, fully personalised finish. It has a wide range of different predefined templates (with the possibility of up to eight images per page) and various background options, offering multiple ways of designing and personalising the photograph album according to the client's preferences.



Front page design

- Insert text
- Backgrounds
- Frames
- Zoom

Allows us to personalise the page backgrounds

- Inserting a photograph as the background in colour, white and black, sepia or blue tones
- Blurring the background photograph in white and black or colour
- Colour backgrounds

Multiple photo editing options

- Design the position of the photographs
- Rotate the photographs
- Allows us to zoom into the photograph
- Enlarge to the desired size



Frames

- Option of choosing colours and thicknesses

Text

- Different sizes, colours and fonts

Without background

- Use photograph that covers the whole page
- Various photos that fit together and cover the whole page

And also the option of predefined designs

- Predefined layouts according to different themes
- Automatic, predefined templates



Mitsubishi sell a range of value added photo products for customers to mount their photographs in quickly and easily.

easyalbum



easycalendar



easygifts
box



Promotional and support material

Mitsubishi Electric knows how difficult it can be to communicate services to the end user, and proposes all this diverse material to identify the sales outlet, and to help advertise all the services available.



Aerial

ref: posaireasy

Create your album in a flash

Instant, personalised album with 20 pages of adhesive film and photographic paper finish, with hard cover binding.

Easyalbum			
Size	Reference		
	Grey	Beige	Black
10 x 15 cm / 4 x 6 inch	ealbum 4x6G2	ealbum 4x6F2	ealbum 4x6B1
15 x 23 cm / 6 x 9 inch	ealbum 6x9G2	ealbum 6x9F2	ealbum 6x9B1
Systems that can be used			
CLICK			
CLICKLITE			
KIOSK GIFT			

Mount your personalised calendars

12-page calendar, with one photograph per month with adhesive film on each page and photographic paper finish with hard support.

Easycalendar	
Size	Reference
10 x 15cm / 4 x 6 inch	ecalendar 4 x 6 inch
15 x 23cm / 6 x 9 inch	ecalendar 6 x 9 inch
Systems that can be used	
CLICK	
CLICKLITE	
KIOSK GIFT	
EASYPHOTO	

Organise your photographs

Foldable box with magneted closure and adhesive film on the top so that it can be personalised. Ideal for keeping photographs of holidays, trips, parties etc. The perfect complement for large orders from clients.

Easygifts box	
Size	Reference
10 x 15 cm / 4 x 6 inch	ebox4x6B1
Systems that can be used	
CLICK	
CLICKLITE	
KIOSK GIFT	
EASYPHOTO	



Kit plv gift

ref: posgift

Floor stand

France

Mitsubishi Electric Europe B.V.
25, Boulevard des Bouvets,
92741 Nanterre Cedex, France
t: +33 (1) 55.68.55.68 - f: +33 (1) 55.68.56.85
www.vis.mitsubishielectric.fr

Germany

Mitsubishi Electric Europe B.V.
Gothaer Str. 8, D-40880 Ratingen, Germany
t: +49 2102-486 9250 - f: +49 2102-486 6840
www.mitsubishi-vis.de

Ireland

Mitsubishi Electric Europe B.V.
Westgate Business Park 24 Ballymount Dublin, Ireland
t: +353 (1) 419.88.00 - f: +353 (1) 419.88.90
www.mitsubishielectric.ie

Italy

Mitsubishi Electric Europe B.V.
Centro Direzionale Colleoni, Palazzo Sirio-Ingresso 1
Viale Colleoni 7, 20041 Agrate Brianza (Mi), Italy
t: +39 (039) 60531 - f: +39 (039) 6057694-7
www.mitsubishielectric.it/vis

Poland

Mitsubishi Electric Europe B.V.
Krakowska 50, PL-32-083 Balice, Poland
t: +48 (0) 12 630 47 00 - f: +48 (0) 12 630 47 01
www.mitsubishielectric.pl

Spain

Mitsubishi Electric Europe B.V.
Carretera de Rubi 76-80 08190
Sant Cugat del Valls, Barcelona, Spain
t: +34 (93) 565-3131 - f: +34 (93) 589-4388
www.mitsubishielectric.es – www.mitsubishiphoto.com

Sweden

Mitsubishi Electric Europe B.V.
Hammarbacken 14, Box 750 S-19127, Sollentuna, Sweden
t: +46 (8) 625-1000 - f: +46 (8) 625-1033
www.mitsubishielectric.se

The Netherlands

Mitsubishi Electric Europe B.V.
Nijverheidsweg 23A, 3641 RP, Mijdrecht, The Netherlands
t: +31 (297) 282461 - f: +31 (297) 283936
www.mitsubishielectric.nl

United Kingdom

Mitsubishi Electric Europe B.V.
Travellers Lane, Hatfield, Herts., AL10 8XB, England, U.K.
t: +44 (0) 1707 278684 - f: +44 (0) 1707 278541
www.mitsubishielectric.co.uk/vis

Russia

Mitsubishi Electric Europe B.V.
8th Floor, Bldg. 3, Kosmodamianskaya Nab. 52,
Moscow, 115054, Russia
t: +7 (495) 721-2070 - f: +7 (495) 721-2071
www.mitsubishielectric.ru